

An Outdoor Passport to the Greater Houston Region



HOUSTON
WILDERNESS

It's Our Nature



Welcome to Houston Wilderness – the most ecologically diverse urban area in the United States! Our area has ten unique ecoregions just waiting for you to discover. Whether it’s kayaking with Artist Boat on the beautiful East End Lagoon, horseback riding on the Big Sandy Trail in the Big Thicket National Preserve, or visiting Johnny Steele Dog Park with your canine family members, you are sure to be impressed with the variety of nature-based activities available in our city and surrounding areas.

What’s your passion? Birding, cycling, hiking, fishing, boating, gardening, family fun, or just exploring one of our many nature parks – you name it, and we’ve got it!

We have myriad state parks, nature preserves, wildlife refuges, museums, and bird sanctuaries – as well as jogging and bike trails, and much, much more.

*So what are you waiting for?
Get Out Here and start exploring!*



Introduction

The Houston Wilderness Region has many interesting facets:

- Houston was founded in 1836 by two entrepreneurial brothers on land near Buffalo Bayou.
- The Houston Wilderness region is comprised of 24 counties in Southeast Texas with more than 19,000 square miles of amazingly diverse habitat
- Its population is over 6 million today, and is expected to reach 7.8 million by 2030.
- The Texas Declaration of Independence was signed and the government of the Republic of Texas was created in the Houston Wilderness region
- Has the longest continuous sidewalk in the world at 10.3 miles
- Has a major Theater District, Museum District, and Pro-Sports District

But also, the Greater Houston Region is home to 10 unique ecoregions – more than any other urban area in the U.S.

This Passport provides information on major ecoregion sites in and around Houston to allow one-time or frequent enjoyment of the unique and captivating biodiversity that the Greater Houston Region has to offer.

Also throughout the passport Hoppi can be found with more interesting facts about Houston and its Ecoregions.

Hi! I'm Hoppi, your guide on your journey to becoming a nature explore.



10 Ecoregions in the Greater Houston Area

Seven of the 10 ecoregions are land-based and include the Big Thicket, Piney Woods, Trinity Bottomlands, Prairie systems, Columbia Bottomlands, Post Oak Savannah and Bayou Wilderness. The three water-based ecoregions are the Bays & Estuaries, Coastal Marshes and Gulf of Mexico.

In these ecoregions there are over 40 nature centers, parks and preserves that are participating in this Passport program. Located throughout the Greater Houston area, none of these sites are more than a 2-hour drive from downtown and some are even just around the corner. These sites can all be explored and contain a variety of active and passive recreational opportunities for visitors and residents to discover! Many of them are free or low cost; please call ahead for details.



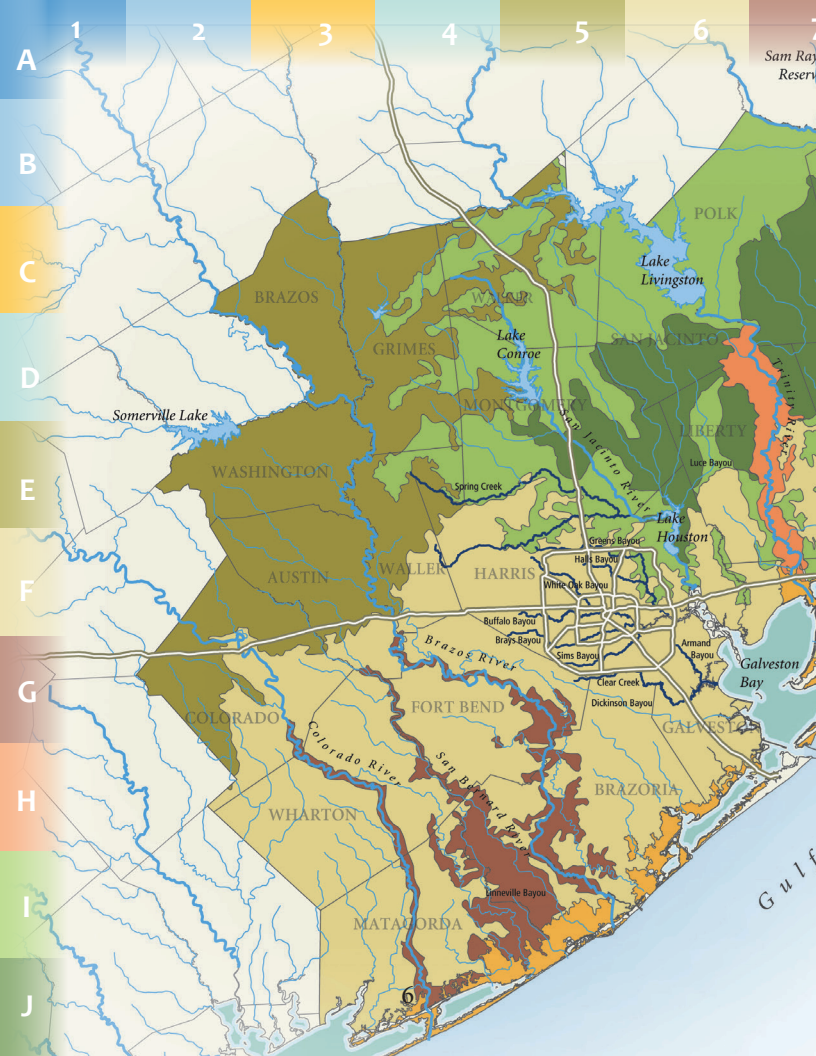
How to Use this Passport

This Passport is organized by Houston Wilderness' 10 Ecoregions. In each section you will find a list of the sites. Under each site is the address and phone number along with icons to illustrate what kind of activities each place offers.

What to wear:
Tennis shoes/hiking boots
Long pants in high grass
Old clothes that can get dirty

What to bring:
Bug Spray, Sunscreen
WATER, Hat, First Aid Kit







- Estuaries & Bays
- Bayou Wilderness
- Prairie Systems
- Trinity Bottomlands
- Big Thicket
- Piney Woods
- Columbia Bottomlands
- Coastal Marshes
- Post Oak Savannah
- Gulf of Mexico

Next to each site is a letter (A-J) and a number (1-10). Refer to this map to get a general idea of where the site is located in the Greater Houston Area. Use the letters to go laterally across the map and then the number to go longitudinally.

Estuaries and Bays

You've heard of nurseries for babies – well, the marshes along the Texas gulf coast provide a nursery area for young fish and shellfish. Where freshwater from rivers meets saltwater from the Gulf of Mexico, you can find an amazing diversity of animals, from fish and oysters to shrimp and blue crabs.

Did you know that 90 percent of the commercial fish and shellfish caught in Galveston Bay and the Gulf of Mexico spend at least part of their lives in an estuary? Can you draw a food web that includes organisms that live in bays and estuaries?



Did you know that Galveston Bay is the second most productive estuary in the country? You can visit this unique ecosystem at **Galveston Island State Park “Bay Side”** and see many animals including birds, fish, and marsh rabbits.

- 1 Artist Boat (H-7)** • (409) 770-0722
2627 Avenue O Galveston, TX 77550
www.artistboat.org/
Kayaking, Watercolor Painting, Wildlife Viewing, Photography, Professional Development
- 2 Galveston Island State Park (H-6)** • (409) 737-1222
“Bay Side”
14901 FM 3005 Galveston, TX 77554
www.tpwd.texas.gov/state-parks/galveston-island
Birding, Camping, Canoeing/Kayaking, Fishing, Hiking/Guided Nature Walks, Biking, Swimming
- 3 Texas State Marine Center (J-3)** • (361) 972-3774
102 Marine Center Drive Palacios, TX 77465
www.palaciosisd.org/vnews/display.v/SEC/Texas+State+Marine+Education+Center
Marine science education, including boats and nature trail, open only to school groups
- 4 Pine Gully Park (G-6)** • (281) 291-5713
605 Pine Gully Road Seabrook, TX 77586
seabrooktx.gov/Facilities/Facility/Details/12
Wildlife viewing, Birding, Fishing, Kayaking, Nature Walks

Below are icons of activities to do in this ecoregion. Refer to page 5 to find out what each symbol is.



Bayou Wilderness

The brown ribbons of water winding through neighborhoods and along city streets may look dirty, but they're actually carrying sand, soil and nutrients down to their ultimate destination: the bays and estuaries.

These waterways also have a number of creatures in them (yes, fish do live in these waters) and they provide homes and food sources to many wild creatures, including opossums, raccoons, armadillos and alligators. They also provide a needed wet place for toads and dragonflies that eat millions of mosquitoes!



Did you know that the Houston Arboretum and Nature Center participates in the **Texas Amphibian Watch**? This program is used to **count the number of frogs and toads** in Texas. Volunteers are trained to listen to amphibian calls and record them.

- 1 Armand Bayou Nature Center (G-6)** • (281) 474-2551
8500 Bay Area Blvd. Pasadena, TX 77258
www.abnc.org/
Eco-Camp, Family Star Parties, Farm Demonstrations (weekends), Guided Canoe/Pontoon Tours, Guided trail hikes (weekends), Raptor, Bison and Snakes Exhibits
- 2 Arthur Storey Park (G-5)** • (281) 496-2177
7400 West Sam Houston Pkwy S, Houston, TX 77072
www.pct3.com/parks/storey-park
Walking Trail, Nature Trail, Birding, Tai Chi Court, Nature Viewing
- 3 Buffalo Bayou Park (F-5)** • (713) 752-0314
1800-3600 Allen Parkway/Memorial Drive
www.buffalobayou.org/
Birding, Canoeing/Kayaking, Hiking/Biking, Boat tours, Cistern Tours, Johnny Steele Dog Park
- 4 Eddie V. Gray Wetlands Center (F-6)** • (281) 420-7128
1724 Market Street Baytown, TX 77520
www.baytown.org/city-hall/departments/parks-rec/eddie-v-grey-wetlands-education-center
Science Experiments and Games, Live Animals, Taxidermy Exhibits, Wetlands Exhibits
- 5 Edith L. Moore Nature Sanctuary (F-7)** • (713) 464-4900
440 Wilchester Blvd, Houston, TX 77079
www.houstonaudubon.org/default.aspx/MenuItemID/883/MenuGroup/Sanctuaries2.htm
Birding, Hiking, Wildlife Viewing, Educational Nature Walks
- 6 Houston Arboretum & (F-5)
Nature Center** • (713) 681-8433
4501 Woodway Drive Houston, TX 77024
www.houstonarboretum.org/
Discovery Room, Hiking Trails, Naturalist Explorer Classes, Self-guided Scavenger Hunt

Bayou Wilderness

- 7 Jesse H. Jones Park (E-5) & Nature Center** • (281) 446-8588
20634 Kenswick Drive Humble, TX 77338
www.hcp4.net/jones/
Akokisa Indian Village, Guided Canoe/Pontoon/Boat Trips, Guided Nature Tours, Hiking Trails,
Live Snake Exhibits, Redbud Hill Homestead
Peak Visiting Hours: Saturday and Sunday afternoons
- 8 Keith Wiess Park (F-5)** • (832) 395-7000
12300 Aldine Westfield Rd. Houston, TX 77093
www.houstontx.gov/parks/parksites/keithwiesspark.html
Hiking, Birding, Picnicking
- 9 MacGregor Park (G-5)** • (713) 747-8650
5225 Calhoun Houston, Texas 77021
www.houstontx.gov/parks/parksites/macgregorpark.html
Swimming Pool, Community Center, Jogging Trail
- 10 Mason Park (G-6)** • (713) 928-7055
541 South 75th Street Houston, Texas 77023
www.houstontx.gov/parks/parksites/masonpark.html
Swimming Pool, Community center, Tidal Freshwater Wetlands, 1.4 mile trail
- 11 Mercer Arboretum (E-5) & Botanic Gardens** • (281) 274-4160
22306 Aldine Westfield Road Humble, TX 77338
www.hcp4.net/mercer/
Birding, Nature Discovery Hikes, Butterfly Gardens, Canoeing/Kayaking
- 12 Memorial Park (F-5)** • (713) 863-8403
6100 Hermann Park Dr. Houston, TX 77030
www.memorialparkconservancy.org/visit-memorial-park.html
Hiking, Birding, Picnicking

- 13 Sims Bayou Urban (G-6)** • (713) 640-2407
Nature Center
 3997 River Drive Houston, TX 77017
www.houstonaudubon.org/default.aspx/MenuItemID/484/MenuGroup/Education.htm
 Birding, Butterfly Gardens, Canoeing, Fishing, Nature Discovery Hikes
 (by appointment only) Peak Visiting Hours: Fridays
- 14 Shangri La Botanical Gardens (E-9)** • (409) 670-9113
& Nature Center
 2111 West Park Avenue Orange, Texas 77630
starkulturalvenues.org/shangrilagardens/
 Birding, Butterfly Gardens, Boat Tours, Nature Discovery Hikes, TEKS-aligned Lessons, Botanical Gardens, Greenhouse Tours
 Peak Visiting Hours: Saturday 10 a.m. - 2 p.m.
- 15 Terry Hershey Park (F-5)** • (281) 496-2177
 15200 Memorial Drive, Houston, TX
www.terryhersheypark.org
 Butterfly Garden, Wildflower Garden, Wetland Habitat, Canoeing, Fishing, Hiking, Biking, Picnicking
- 16 Tony Marron Park (G-5)** • (713) 752-0314
 808 N. York Street Houston, Texas 77003
www.buffalobayou.org/visit/destination/neighbor-parks
 Children's Playground, Walking Trails

You can bring your family to many of these sites to explore and learn about Houston's Bayou Wilderness.



Prairies

Did you know that the Houston area used to be home to many bison and tall grasses? When settlers arrived, most of Houston had prairie grasses taller than a 6-foot person. Today, less than 1 percent of the original coastal prairie still exists. These areas are very important to migrating birds and are home to more than 1,000 plant species, including big bluestem and little bluestem. Can you see the blue in little bluestem?

Can you describe the relationship between the Native Americans and the bison?



Did you know that pocket prairies are popping up in Houston's urban core? The **M.D. Anderson Pocket Prairie** in the Texas Medical Center (TMC) provides an excellent wildlife habitat in the city and also presents educational and recreational opportunities that benefit patients and visitors of the TMC.

- 1 Attwater Prairie Chicken NWR (G-3)** • (979) 234-3021
FM 3013 Eagle Lake, TX 77434
www.fws.gov/refuge/Attwater_Prairie_Chicken/
Auto Tour (5 miles), Hiking (2 trails), Wildflower Identification
- 2 George Ranch Historical Park (G-5)** • (281) 343-0218
10215 FM 762 Richmond, TX 77406-1248
www.georgeranch.org/
Cowboy Demonstrations, Blacksmith Shop, Heritage Trail, Working Ranch with animals
- 3 Texas City Prairie Preserve** • (409) 941-9114
4702 Highway 146 North Texas City, TX 77590
www.nature.org/ourinitiatives/regions/northamerica/unitedstates/texas/placesweprotect/texas-city-prairie-preserve.xml
Birding, Boardwalks, Group Camping, Prairie Studies, Seining
- 4 Katy Prairie Conservancy Preserves** • (713) 523-6145
Wildlife Viewing Platform, Site 100 on Upper TX Coast Birding,
Trail - west of Nelson Farm Preserve 28411 Sharp Road Katy, TX
www.katyprairie.org/directions
Birding, Hiking, Kid's Group, Weekend Tours
- 5 Sheldon Lake State Park (F-6)** • (281) 456-2800
14140 Garrett Rd. Houston, TX 77044
www.tpwd.state.tx.us/state-parks/sheldon-lake
Canoeing, Catch and Release Fishing, Nature walks



Trinity Bottomlands

The Trinity River area is home to many large hardwood trees, including cypress and tupelo. These trees act as a very important flood buffer. When rains make the Trinity River grow wider, this area absorbs the floods, holding back water with the roots of the trees and plants that grow along its shores.

Did you know that cypress trees have adaptive features called “knees”? Can you think of ways “knees” might help the tree survive?



Did you know that **half of all the bird species** identified in the United States live in or migrate through the Trinity and Columbia Bottomlands?

1 Trinity River (E-7) • (936) 336-9786
National Wildlife Refuge

601 FM 1011 Liberty, TX 77575

Coordinates: (30.098288, -94.765547)

www.fws.gov/refuge/trinity_river/

Birding, Canoeing, Fishing, Wildlife Observation

2 USACE Wallisville Lake Project (F-7) • (409) 389-2285

FM 563 Wallisville, TX 77597-0036

www.swg.usace.army.mil/Locations/WallisvilleLakeProjectOffice.aspx

Boating, Canoeing, Fishing, Hunting, Wildlife Viewing



Don't forget to reference pages 6 & 7 to locate where each site is by using the letter-number coordinates.



Big Thicket

In the thick, green woods known as the Big Thicket, you can find orchids and insect-eating plants! The Big Thicket is a fragile ecosystem where Southeastern swamp meets Eastern hardwood forest, Midwestern prairie and elements of the Southwestern desert landscape. The diversity of plants here attracts many migrating songbirds.

Can you name four kinds of insect-eating plants found in the Big Thicket? What sorts of trees provide the best habitat for songbirds?



Did you know that **Big Thicket National Preserve** has over 45 miles of hiking trails? Did you also know that along these trails live several species of **carnivorous plants**? But don't worry, these plants prefer insects to humans!

- 1 Big Thicket**  • (409) 951-6700
National Preserve (D-8)
6102 FM 420 Kountze, TX 77625
www.nps.gov/bith/index.htm
- 2 Martin Dies, Jr. State Park (B-8)**  • (409) 384-5231
634 Private Road 5025 Jasper, TX 75951
www.tpwd.state.tx.us/state-parks/martin-dies-jr
- 3 Village Creek State Park (D-8)**  • (409) 755-7322
US 96 Lumberton, TX 77657
www.tpwd.state.tx.us/state-parks/village-creek
- 4 Lake Creek Preserve (E-5)**  • (281) 576-1634
Sendera Ranch Dr, Montgomery, TX 77316
<http://lakecreektx.org/>



Be sure to check out the horseback riding trails in the Big Thicket.



Piney Woods

The Piney Woods are named for loblolly, shortleaf and longleaf pines. Mostly found in East Texas, these trees stretch all the way west to Montgomery County, just north of Houston. Longleaf pines were almost lost due to logging and lack of fire, but thanks to new forestry methods, they will hopefully make a return.

How does the use of controlled fires help longleaf pines grow back? How does fire affect the other organisms in this ecosystem?



Did you know that the **endangered red-cockaded woodpecker** is the only American bird to carve out its nesting cavity in a living pine tree? Red-cockaded woodpeckers prefer to nest in **longleaf pines** over 100 years old, but will adapt to other pine species.

- 1 Lake Houston Wilderness Park (E-6)** • (281) 399-8464
 22031 Baptist Encampment Road New Caney TX 77357-7731
www.houstontx.gov/parks/parksites/lakehoustonpark.html
 Biking, Birding, Camping, Hiking, Horseback Riding
- 2 W. Goodrich Jones State Forest (E-5)** • (936) 273-2261
 1328 FM 1488 Road Conroe, TX 77384
texasforests.tamu.edu/jones-state-forest/
 Biking, Birding, Fishing, Hiking, Horseback Riding, Wildlife Viewing
- 3 Lake Livingston State Park (C-6)** • (936) 365-2201
 300 Park Road 65 Livingston, TX 77351
www.tpwd.texas.gov/state-parks/lake-livingston
 Camping, Fishing, Boating, Birding, Hiking, Horseback Riding
- 4 Huntsville State Park (C-5)** • (936) 295-5644
 Park Road 39 Huntsville, TX 77342-0508
www.tpwd.texas.gov/state-parks/huntsville
 Biking, Canoeing, Camping, Fishing, Hiking, Horseback Riding, Swimming
- 5 Montgomery County Preserve (E-5)** • (281) 367-7283
 1118 Pruitt Road Spring, TX 77380
www.springcreekgreenway.org/mcp.htm
 Biking, Birding, Fishing
- 6 Sam Houston National Forest (C-5)** • (936) 344-6205
 394 FM 1375 West New Waverly, TX 77358
www.fs.usda.gov/detail/texas/about-forest/districts/?cid=fswwdev3_008443
 Multi-use trails, Fishing, Hunting, Boating, Swimming, Birding, Wildlife Viewing



Columbia Bottomlands

Every year, almost 30 million migratory birds stop in this area along the Brazos, Colorado and San Bernard rivers. The old trees in these wet, low-lying and insect-rich forests help provide rest and food for the birds.

Did you know that the Colorado River flows almost 900 river miles and drops roughly 3,000 feet from the river's origin in Dawson County to Matagorda Bay? It is the longest river that has its entire course in Texas. Can you trace the length of the Colorado River on a map?



Did you know that the number of birds stopping in the Columbia Bottomlands is so large that **they can be seen on radar** when they fly across the Gulf of Mexico?



- 1 Bates M. Allen Park (H-4)** • (281) 835-9419
630 Charlie Roberts Ln, Kendleton, TX 77451
www.fortbendcountytx.gov/index.aspx?page=381
Walking Trails, Observation Deck, Fishing, Wetlands, Canoeing
- 2 Brazos Bend State Park (G-5)** • (979) 553-5102
21901 FM 762 Needville, TX 77461
www.tpwd.texas.gov/state-parks/brazos-bend
Alligator Observation, Biking, Fishing, Guided and Interpretive Hikes, Stargaze at George Observatory Nature Center
- 3 Matagorda County Birding (I-4) Nature Center** • (979) 245-3336
1025 State Highway 35 S Bay City, TX 77414
www.mcbnc.org/
Birding, Nature Gardens, Kayaking
- 4 San Bernard (J-5) National Wildlife Refuge** • (979) 964-3639
6801 CR 306 Brazoria, TX 77515
www.fws.gov/refuge/san_bernard
Biking, Birding, Canoeing/Kayaking, Hiking (3 trails), Wildlife Observation
- 5 Seabourne Creek Nature Park** • (832) 595-3960
3831 State Highway 36 Rosenberg, Texas
www.ci.rosenberg.tx.us/index.aspx?page=355
Walking, Jogging and Biking Trails, Wetlands, Prairie Restoration Area, and Butterfly Garden



Coastal Marshes

Coastal marshes act as important sponges, helping slow and absorb storm surges (when wind and rain increase) that might otherwise do greater damage farther inland. Coastal marsh wetlands also act as filters, as the plants and soils found there clean the water of sediment and pollutants.

Can you name five organisms you might find in a coastal marsh? What special adaptations do they have for living in this ecosystem?



Did you know that Southeast Texas is one of the best places for **alligator viewing**? At **Anahuac NWR** you can often see the alligators sunning themselves on the banks of the bayous and ponds!

1 Anahuac National Wildlife Refuge (G-8) • (409) 267-3337

FM 1985 Anahuac, TX 77514

www.fws.gov/refuge/Anahuac/

Birding, Boardwalk, Canoeing, Fishing, Wildlife Observation

2 Brazoria National Wildlife Refuge (I-6) • (979) 922-1037

County Road 227 Freeport, TX 77541

www.fws.gov/refuge/brazoria

Birding, Canoeing, Fishing, Hiking, Wildlife Observation

3 East End Lagoon (H-7) • (409) 797-5000

On Galveston Island at the east end of Seawall Blvd.

along Boddecker Dr. adjacent to Apffel Park (East Beach)

www.eastendlagoon.org/about/

Fishing, Crabbing, Kayaking, Hiking, Birding, Nature Photography

4 San Jacinto (F-6) • (281) 479-2421

Battleground State Park

3523 Independence Parkway South LaPorte, TX 77571 (TX Hwy 134)

www.tpwd.state.tx.us/state-parks/san-jacinto-battleground

Battleship Texas Tours, Marsh Boardwalk Trail, Monument Lookout, Texas Forever Presentation

5 Sea Rim State Park • (409) 971-2559

19335 S. Gulfway Drive Sabine Pass, TX 77665

www.tpwd.texas.gov/state-parks/sea-rim

Camping, Kayaking & Canoeing, Beachcombing, Swimming, Fishing, Hunting (in season), Board Walk



Post Oak Savannah

The Post Oak Savannah is a land of mostly grassy areas with clumps of post oak trees scattered throughout. In the past, fire was an important part of the ecosystem, where it would burn before being stopped by either a change in topography or the weather. The post oaks would survive even if wildfires destroyed the grasses, leaving clumps of trees on the grassy plains.

The Post Oak Savannah is home to many animals, including wild turkeys, red-tailed hawks, white-tailed deer and coyotes. What are some of the ways that wild turkeys get water in this ecosystem?



Did you know that Post Oaks can grow to be 300 years old? There have even been some Post Oaks found that were over **400 years old!**

- 1 Stephen F. Austin State Park (F-3)** • (979) 885-3613
Park Road 38 San Felipe TX 77473-0125
www.tpwd.texas.gov/state-parks/stephen-f-austin
Camping, Fishing, Hiking on 5 miles of trails, Nature and Historical Tours
- 2 Washington-on-the-Brazos (E-3)** • (936) 878-2214
State Park
23200 Park Road 12 Washington, TX 77880
www.tpwd.texas.gov/state-parks/washington-on-the-brazos
Barrington Living History Farm, Historical Reenactments, Independence Hall, Star of the Republic Museum, Washington Townsite



Gulf of Mexico

Surrounded by the United States, Mexico and Cuba, the Gulf of Mexico is more than half a million square miles of warm, sunlit waters and a steady food supply for an array of fish, wildlife and humans alike. About two-thirds of the continental United States drains into the Gulf, including states as far away as Montana and New York.

The Gulf of Mexico is the ninth largest body of water in the world and home to unique coral reef ecosystems, including the Flower Garden Banks National Marine Sanctuary, about 100 miles from the coast of Galveston.



Did you know that the Gulf Stream, which originates in the Gulf of Mexico, is **one of the strongest ocean currents on earth**? The stream exits the Gulf through the Strait of Florida, follows the eastern coastline of the United States and crosses the Atlantic Ocean to Europe and Africa.

- 1 Sea Center Texas (H-5)** • (979) 292-0100
300 Medical Drive Lake Jackson, TX 77566
www.tpwd.state.tx.us/spdest/visitorcenters/seacenter/
Aquariums, Coastal Marsh Walkway, Fishing Pond, Marine Hatchery, Touch Pools
- 2 Matagorda Bay Nature Park (J-4)** • (979) 863-2603
6420 FM 2031 Matagorda, TX 77457
www.lcra.org/parks/developed_parks/matagorda.html
Camping, Fishing, Birding
- 3 Galveston Island State Park
“Gulf Side” (H-6)** • (409) 737-1222
14901 FM 3005, Galveston, TX, 77554
www.tpwd.texas.gov/state-parks/galveston-island
Camping, Birding, Nature Study, Hiking, Fishing, Swimming
- 4 Houston Audubon’s Bolivar
Flats Bird Sanctuary** • (713) 932-1639
For directions visit:
<http://www.houstonaudubon/default.aspx/MenuItemID/862/MenuGroup/Boliver.htm>
Birding, Nature Study, Crabbing

Visit Galveston Island State Park and
experience two different ecoregions;
Estuaries and Bays and Gulf of Mexico



Other Places to Explore

The Houston Wilderness region has a rich, vibrant history that can be explored and learned about at a variety of museums and cultural centers throughout the 10 ecoregions. Discovering the roles that nature plays in the decisions our ancestors made can be fascinating and rewarding. Many of the “Other Places to Explore” sites offer special exhibits and programs that provide excellent learning opportunities for people of all ages.



Museums and Zoos can be good places to learn about ecosystems locally and around the world. A breeding program at the Houston Zoo is working to save the **Attwater's Prairie Chicken** from extinction.



- 1 Brazos Valley Museum (C-2) • (979) 776-2195**
of Natural History
3232 Briarcrest Drive Bryan, TX 77802
www.brazosvalleymuseum.org/
Nature Art Exhibitions
- 2 Center for the Arts & Sciences (G-5) • (979) 265-7661**
Brazoria County 400 College Blvd Clute, TX 77531
www.bcfas.org/
Center Stage, Planetarium, Museum, Symphony, Art League
- 3 Children’s Museum of Houston (G-5) • (713) 522-1138**
1500 Binz Houston, TX 77004
www.cmhouston.org/
Ecostation, The Discovery Room
- 4 Discovery Green (G-5) • (713) 400-7336**
1500 McKinney Houston, TX 77010
www.discoverygreen.com/
Kinder Lake Basin, Houston Public Library Express, Native Butterfly Gardens, Playground, Gateway Fountain Swimming, Walking Trail
- 5 Hermann Park (I-5) • (713) 524-5876**
6100 Hermann Park Drive, Houston TX 77030
www.hermannpark.org/
Hiking, Birding, Picnicking, McGovern Centennial Gardens, Japanese Garden, Miller Outdoor Theater

Other Places to Explore

- 6 Houston Museum (G-5) • (713) 639-4629**
of Natural Science
One Hermann Circle Drive Houston, TX 77030
www.hmns.org/
Cockrell Butterfly Center, Texas Wildlife Exhibit, Hamman Hall of Texas Coastal Ecology
- 7 Houston Zoo (G-5) • (713) 533-6500**
6200 Hermann Park Drive Houston, TX 77030
www.houstonzoo.org/
Natural Encounters Exhibit, Naturally Wild Swap Shop, Brown Education Center,
- 8 Museum of the Gulf Coast (F-9) • (409) 982-7000**
700 Procter Port Arthur, TX 77640
www.museumofthegulfcoast.org
School Tours, Youth Programs, Community of Culture Series
- 9 Nature Discovery Center (G-5) • (713) 667-6550**
7112 Newcastle Bellaire, TX 77401
www.naturediscoverycenter.org/
Discovery Rooms, Pocket Prairie, Wildlife Viewing, Picnicking





HOUSTON
ARBORETUM &
NATURE CENTER

The Houston Arboretum & Nature Center is an urban nature sanctuary that has been serving Houstonians for the last 50 years. Come make memories on our trails and in our classrooms. Nature awaits!

WWW.HOUSTONARBORETUM.ORG



Great Green Quest

Plan on a summer of adventure and fun by joining the Great Green Quest! It's a friendly challenge for families, schools, nature lovers, and outdoor enthusiasts to visit all ten ecoregions over the summer.

For more information, or if you would like to become a sponsor for an area school, please visit greatgreenquest.org or houstonwilderness.org/ggq



Get Outdoors Houston

Download the mobile friendly app today!

Get Out Here is a website and corresponding phone App designed as a portal into the fun and exciting outdoor adventures throughout the Houston Gulf Coast region. There are many events happening every week in Houston to help you get outside and engaged in different parts of the 10 ecoregions in and around the Houston area. Go to the site below to find what, where, and when events and outdoor activities are taking place.

Getoutherehouston.org

HOUSTON WILDERNESS

is a broad-based alliance of business, environmental and government interests that acts in concert to protect, preserve and promote the unique biodiversity of the region's precious remaining ecological capital from bottomland hardwoods and prairie grasslands to pine forests and wetlands.

This mission is accomplished through
Convening various groups to promote protect and preserve the biodiversity in our 10 ecoregions; providing collaborative Problem-solving opportunities on critical environmental issues; and Educating the public on the many exciting outdoor opportunities in the Greater Houston Region and the health benefits associated with nature. These ecoregion landscapes decrease repetitive flooding, improve water quality boost outdoor recreation, ecotourism and economic growth.

www.houstonwilderness.org



HOUSTON
WILDERNESS

It's Our Nature